

Follow Me Home

(Scotland)

Devised by Ellie Briscoe of Alexandria, Virginia.

Music:

6/8 meter

Formation: A jig for 4 cpls in a longways.set.

Steps: Cast, Reels of 3,

Bars

Pattern

Chord INTRODUCTION Bows and curtseys.

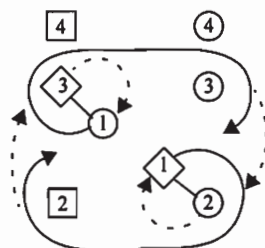
1-8 1st cpl set and, giving R hands, cross over. They Cast off one place on opp sides and then turn with the L hand to finish i a diagonal line of four between 1st corners. 1st cpl retain ptr's L hand and give R hands to 1st corners.

2nd cpl step up on bars 5-6.

9-10 1st cpl balance in line with 1st corners.

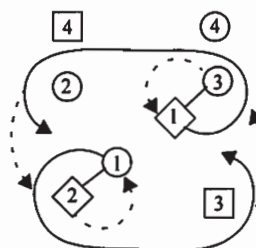
11-16 Releasing L hands, 1st cpl turn 1st corners half way round with the R hand and then, releasing R hands, 1st cpl, followed closely by their corners, chase CW half way round the set passing behind 2nd W and 3rd M. At the end, the corners have changed places with each other, while 1st cpl dance in to join R hands in a diagonal line of 4 between 2nd corners and join L hands with 2nd corners (Fig 1).

Fig 1



Top

Fig 2



Top

17-18 1st cpl balance in line with 2nd corners.

19-24 Releasing R hands, 1st cpl turn 2nd corners half way around with the L hand and then, releasing hands, 1st cpl, followed closely by their corners, chase CCW half way around the set passing each other by the L to finish in @nd place on opp sides facing out.

All are on opp sides in the order 3, 1, 2 (Fig 2).

25-28 3rd, 1st, and 2nd cpls dance half Reels of 3 on opp sides, 3rd and 1st M, and 1st and 2nd W passing by the L to begin.

29-32 2nd, 1st, and 3rd cpls Set on opp sides and, giving R hands, cross over. Repeat, having passed a cpl.

Presented by Jennifer Kelly